



In honour of Dr. Seuss Day on March 2nd why not make oobleck?

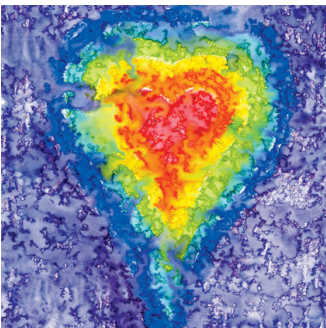
1. Mix 1 part water with 1.5 to 2 parts cornstarch. You may wish to start with one cup of water and one and a half cups of cornstarch, then work in more cornstarch if you want a more 'solid' oobleck. It will take about 10 minutes of mixing to get nice homogeneous oobleck.
2. Mix in a few drops of food coloring if you want colored oobleck.

"You're never too old, too wacky, too wild, to pick up a book and read to a child."

CELEBRATE THE FIRST DAY OF SPRING MARCH 20, 2011

First day of Spring Button Bouquet

- For each flower, thread an 8-inch length of florists' wire up through a stack of colorful buttons, then back down, as shown
- Twist the wire just below the stack to secure it, then insert the flower in your plant's soil.



PAINTING IN THE RAIN

- Draw on card stock with washable markers, then place the papers outdoors in the rain until the colors have run.
- Bring the paintings back inside and put them on a flat surface to dry.

March 23rd is National Toast Day-make some Monster Toast for snack!

1. Pour small amount of milk into 4 containers.
2. Add food coloring to each container.
3. Then paint a blue, red, yellow, or green monster on the slice of bread.
4. Toast.
5. Butter lightly.
6. Then do the MONSTER MUNCH!



BUNNY ENVELOPE in honour of Easter

- 4X6 envelope
- Pencil
- Scissors
- Pink construction paper
- Red marker
- Pom pom
- Wiggle eyes



1. Lick the envelope shut.
2. Turn the envelope up long ways (portrait). Note: Most of the envelope will be ears.
3. Leave about 2 inches to draw on the bunny face. Draw on ears and cut around the ears. Note: This leaves you with a little opening for the grass and eggs.
4. Cut inner ears out of pink construction paper and glue in place.
5. Glue on wiggle eyes, or cut eyes out of construction paper and glue in place.
6. Glue on pom pom nose, or cut a nose out of construction paper and glue in place.
7. Draw on mouth with red pen.
Fill opening with Easter grass and an egg or goodies.